



Francis Marion University

Campus Development Summary 2001-2017  
“A Look Back with an Eye on the Future”



## Introduction

Francis Marion University has experienced a dynamic period of growth in capital facilities during the last 17 years consistent with the vision of the University's founders. This document highlights the major capital construction and renovation projects during this exciting time on campus.

Table of Contents	Page
The Academic Core	3
Support Facilities	15
Student Life	18
Campus Housing	26
Campus Grounds	31

*“It is rich in growth and presents great opportunities to develop a beautiful campus. We envisage a park-like character with the buildings set among large trees and open sunny areas...Students brought up in beautiful, natural surroundings receive the kind of education that will make them conscious of the quality of their environment and mindful future citizens”*

– Francis Marion College Campus Development Plan 1971



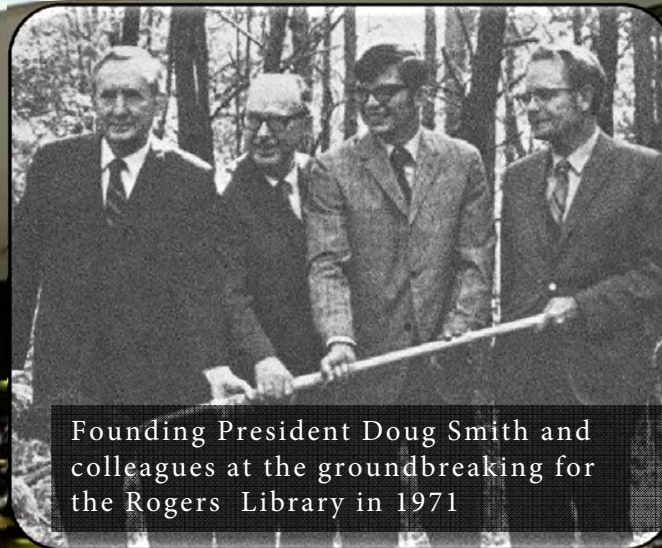


Francis Marion University

# THE ACADEMIC CORE



# JAMES A. ROGERS LIBRARY



Founding President Doug Smith and colleagues at the groundbreaking for the Rogers Library in 1971

*“There was fundamental agreement that the academic heart of the campus should be located in the center of the 300 acres with the library as its visual head facing Highway 327. This set the building back from the road sufficiently to provide a nucleus around which all other elements of the plan could revolve”*

- Francis Marion Campus Development Plan (1971)





### RICHARDSON CENTER FOR THE CHILD 2008

This 15,000 square-foot facility houses a child care program, classrooms, a developmental clinic, research facilities and community programs.



### PEE DEE EDUCATION RESEARCH CENTER 2005

Approximately 9.5 acres of land along with a 14,880 square foot facility known as the Pee Dee Education Research Center were donated to the University by the Pee Dee Educational Research Corporation in exchange for a 99 year lease of the facility back to the organization.



## LEE NURSING BUILDING 2006

Approximately 30,000 square foot building which houses the stand-alone FMU baccalaureate nursing program. Includes tiered classrooms, a clinical laboratory, computer lab, faculty/administrative office space, a conference room and an auditorium.





### LOWRIMORE AUDITORIUM RENOVATION 2003

Serves as a classroom and is used for symposiums, forums, lectures, movies and other events. Installed new seating, acoustical panels, lighting, a presentation stage and a smaller teaching stage. Added three wall-mounted cameras to record or broadcast live events and new audio/visual equipment.



### CHAPMAN AUDITORIUM RENOVATION 2007

This facility, located in the McNair Science Building, serves Academia, Fine Arts, and the local community. It includes an auditorium and two classrooms/wings to support events with total seating capacity of 428. Renovations included new seating, carpeting, lighting, AV equipment, laminated panels and trim.





### FOUNDERS HALL/MEDIA CENTER RENOVATION 2007 & 2015

---

Replaced carpet, renovated bathrooms and replaced hallway furniture in these extensively used classroom buildings.



### FINE ARTS GALLERY 2016

---

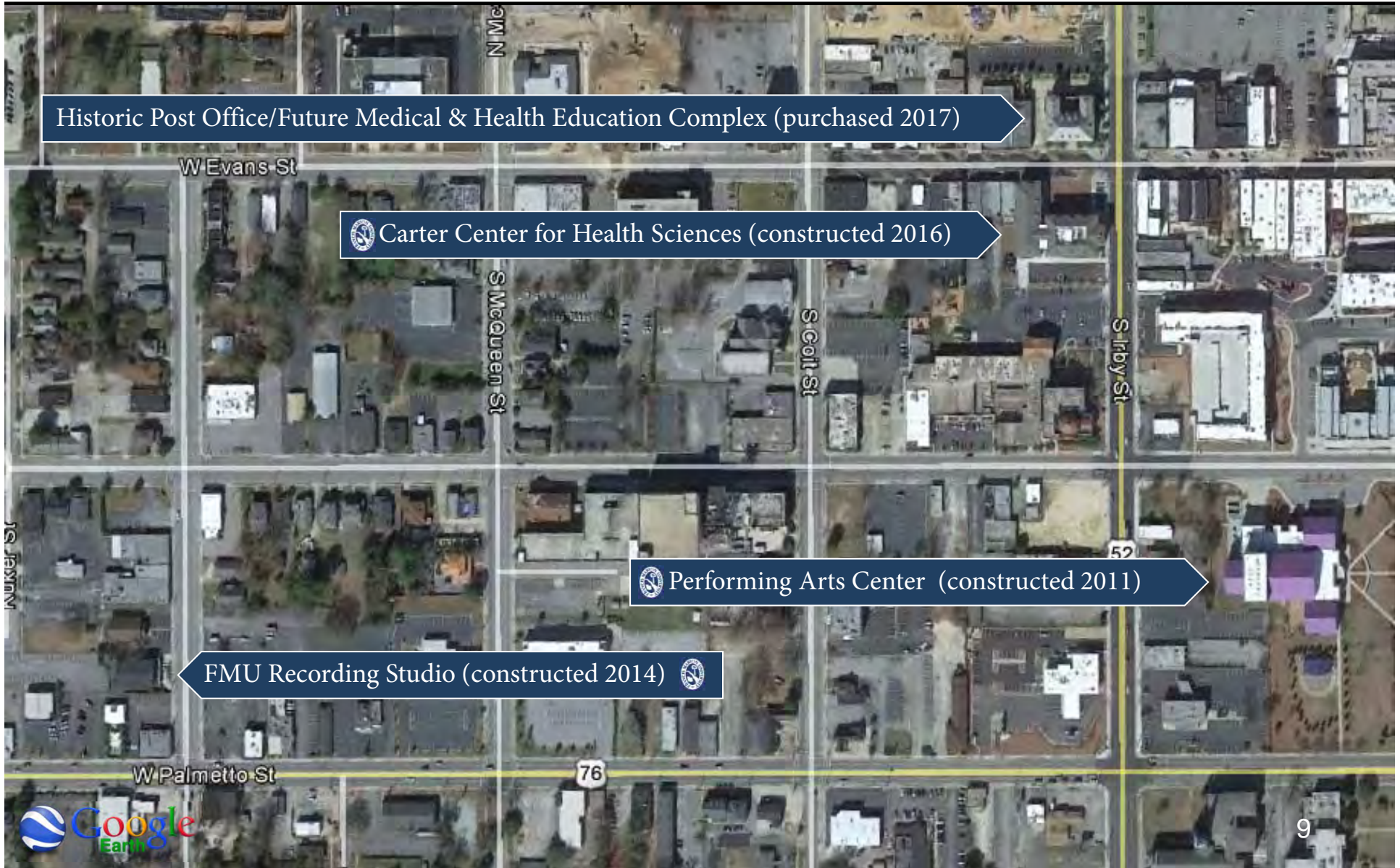
Located in the Hyman Fine Arts Building, this gallery was significantly renovated to refresh and lighten up the space to better accommodate displays. Renovations included painting, new flooring, lighting and furniture.





# Francis Marion University

## Downtown Florence Locations



Historic Post Office/Future Medical & Health Education Complex (purchased 2017)

 Carter Center for Health Sciences (constructed 2016)

 Performing Arts Center (constructed 2011)

FMU Recording Studio (constructed 2014) 





## FMU PERFORMING ARTS CENTER 2011

This facility, constructed in downtown Florence, includes a state of the art 849 seat main auditorium with a fly tower and orchestra shell, a 100 seat flexible black box space, academic wing, and a 500 seat amphitheatre.



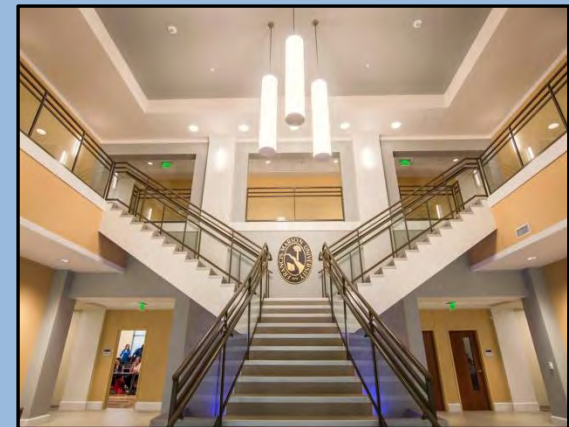




## FMU RECORDING STUDIO 2014

---

This state of the art facility utilizes both classic analogue and modern digital equipment. The studio features two isolation booths and a great room large enough to handle ensembles of any kind.



## CARTER CENTER FOR HEALTH SCIENCES 2016

Located in downtown Florence, this 50,000-square foot building houses FMU's graduate programs in the health sciences and allied programs associated with the USC School of Medicine.





## HISTORIC POST OFFICE ACQUISITION 2017

---

The historic Florence Post Office, originally constructed in 1906, is a three-story building with approximately 30,000 square feet of space. Through the efforts of private donors and the City of Florence, this building was acquired by the FMU Education Foundation in 2017.



## HISTORIC POST OFFICE RENOVATION

---

It is Francis Marion's intent to preserve the unique design and beauty of this historic landmark while equipping it to be a contemporary instructional facility.

The University would use this building to expand the growth of existing health and medical programs and house future programs in speech, occupational and physical therapy.

This building is in close proximity to downtown hospitals where most of these students would complete their clinical requirements.







Francis Marion University

# SUPPORT FACILITIES



## THE COTTAGE 2003

This 4,000 square foot facility is a quiet haven located between the Stokes Administration Building and the Stanton Academic Computer Center. It serves as a gathering place for FMU faculty, staff, alumni and guests.



## FMU EDUCATION FOUNDATION & NON-PROFIT CONSORTIUM 2007

The FMU Education Foundation purchased this building and approximately 4 acres of land across from the FMU campus with the FMU Education Foundation and a few non-profits organizations relocating to this facility. The University's Counseling and Testing department and Student Health also utilize this building.







## OFFICE SERVICES BUILDING 2013

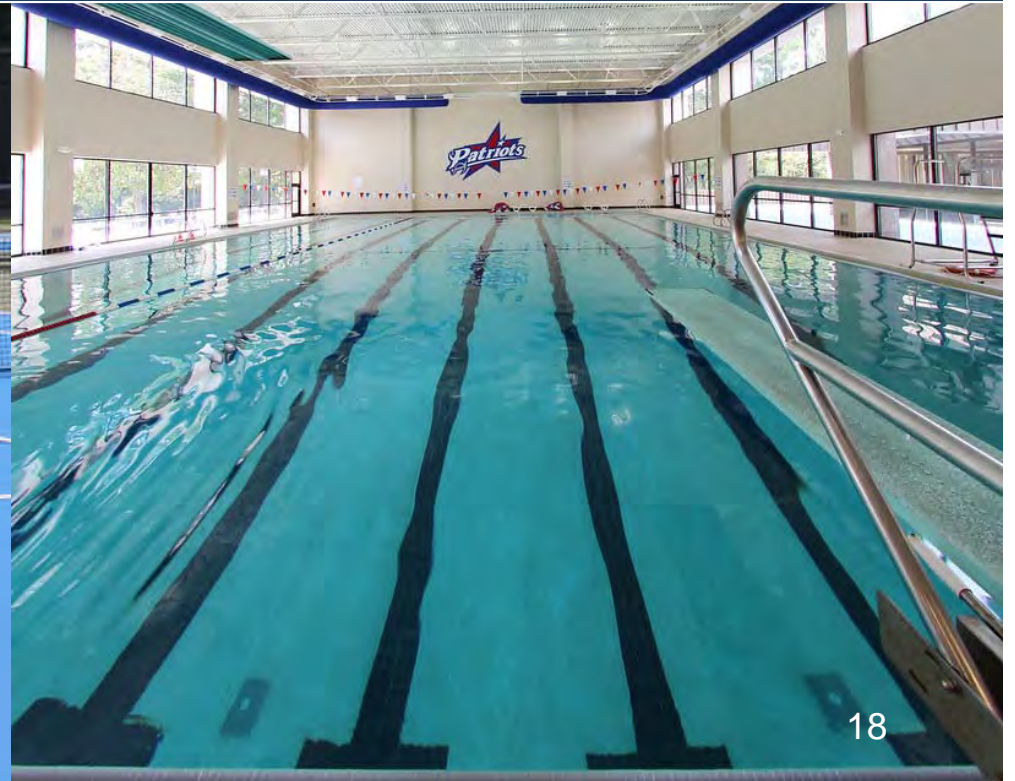
---

This facility, located north of the Hyman Fine Arts Building, is the home for campus mail and printing services.



Francis Marion University

# STUDENT LIFE







In 2001, the outdoor pool was constructed adjacent to the Village Apartments.



### KASSAB TENNIS COURTS COMPLETE RENOVATION 2003

Consists of eight tennis courts surfaced with plexi-pave, four of which are lighted. Renovated with new entranceway and major upgrades to the court surfaces, fencing, and landscaping.







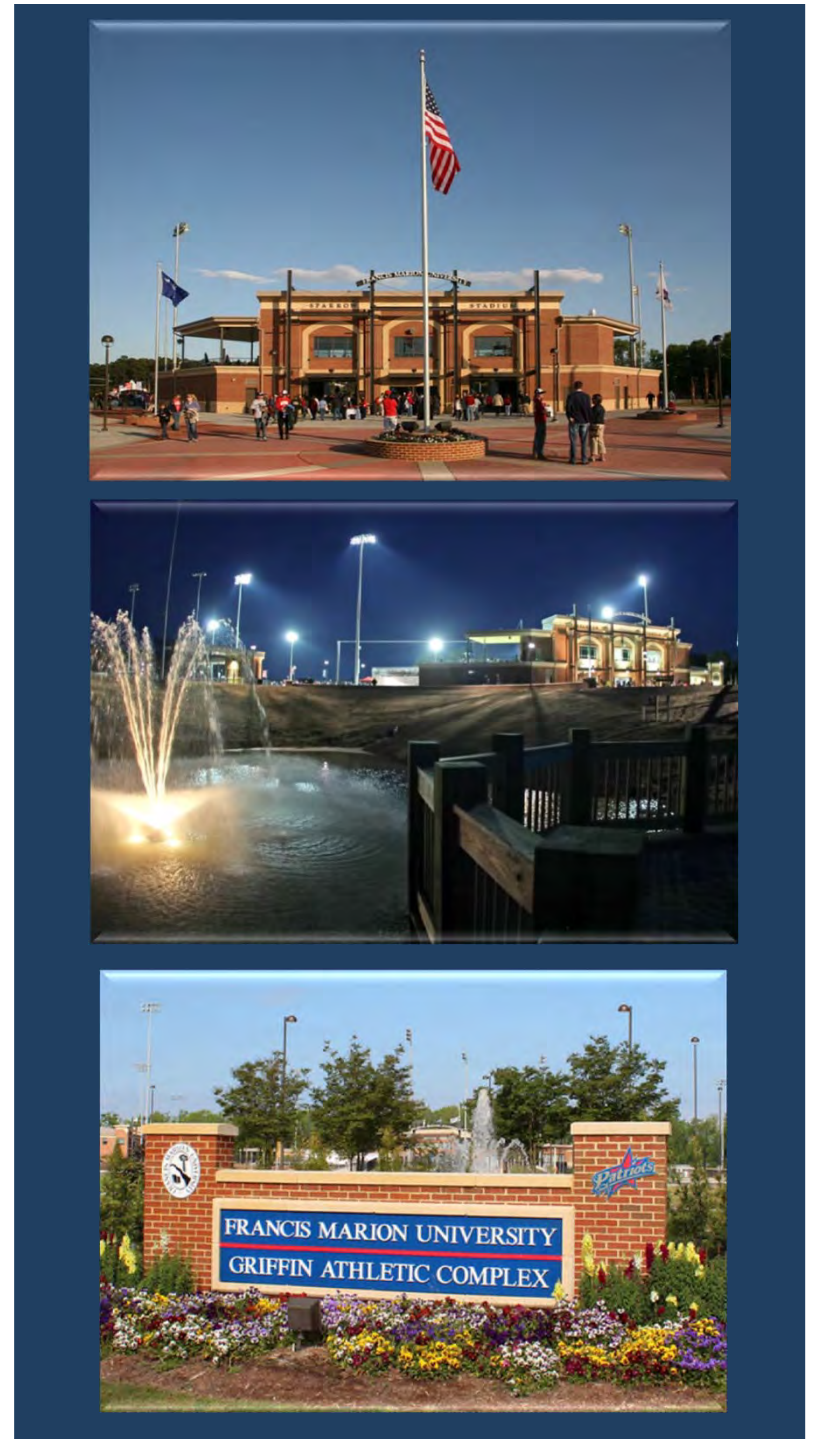
The Grille was constructed in 2006 to provide a venue for both residential and commuter students to dine and relax. Approximately 4,800 square feet indoors with additional porch and patio seating.



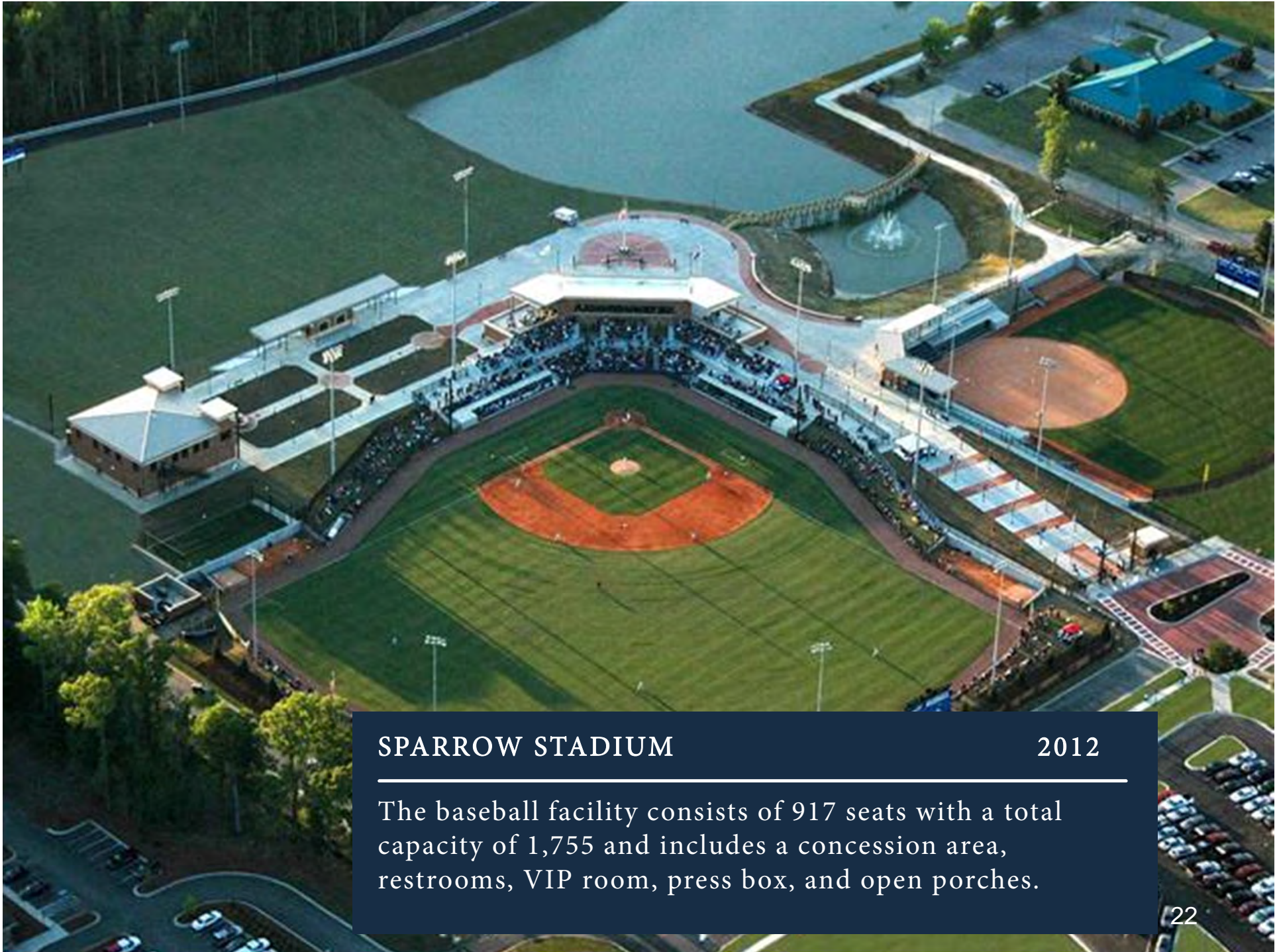




Constructed in 2012, the Griffin Athletic Complex is located across Highway 327 from the main campus and includes the Cornell Baseball field at Sparrow Stadium, the Hartzler Soccer Field, the FMU Softball Stadium, and a new Field house with office space and locker rooms.







## SPARROW STADIUM

2012

The baseball facility consists of 917 seats with a total capacity of 1,755 and includes a concession area, restrooms, VIP room, press box, and open porches.





## ATHLETIC FIELD HOUSE

2012

---

Houses locker rooms, conference room and coaches offices for several sports.

## SUBWAY & GRILLE WORKS 2015

In 2015, the Grille was renovated to include two new dining venues, Grille Works and Subway.



## CAUTHEN CAFÉ 2015

Located in the Cauthen Media Center to provide easy access from the Founders Hall Breezeway, Cauthen Café features pastries, sandwiches, salads as well as Starbucks espresso drinks, frappuccino blended beverages and drip varieties.



## PROVISIONS ON DEMAND CONVENIENCE STORE 2016

Located in the Dining Hall close to most of the campus housing, this convenience store offers a wide variety of snacks, beverages, and grab and go items.







## PATRIOT BOOKSTORE RENOVATION

2016

Located in the Smith University Center, the Patriot Bookstore was renovated to include new flooring, painting, wall treatments, shelving and displays.



Francis Marion University

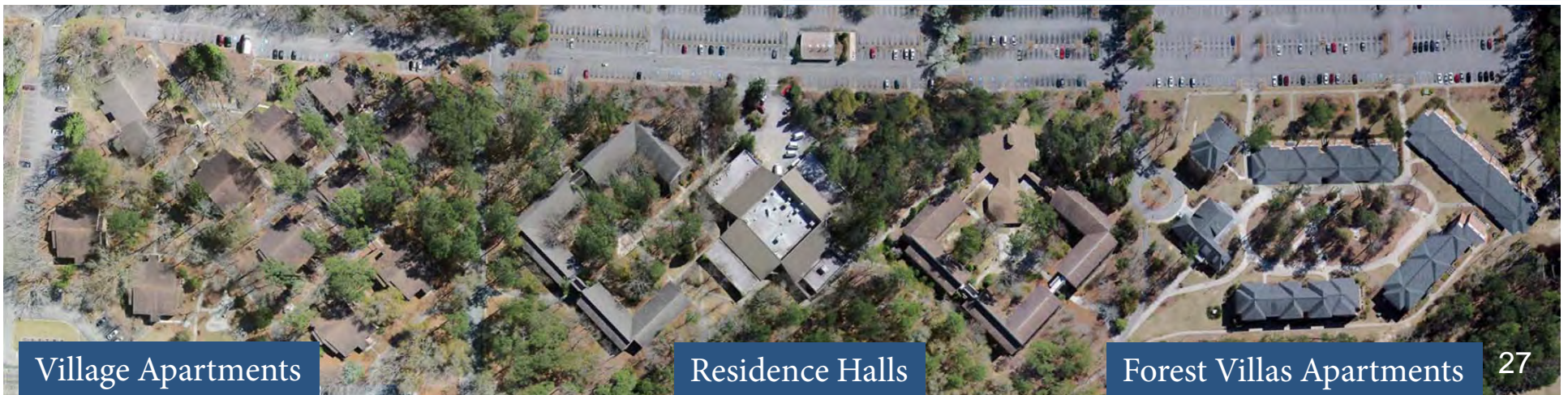
# CAMPUS HOUSING





*“The plan envisions the dormitories in the area east of the academic center in the deep, quiet part of the land, that section furthest away from the main road. They are arranged in three groups...Each group exists as an entity within itself and will, it is hoped, develop a more individual rather than a mass life style for the students. With this arrangement dormitories can be built in stages as the needs of the community require.”*

- Francis Marion Campus Development Plan (1971)



Village Apartments

Residence Halls

Forest Villas Apartments





## FOREST VILLAS APARTMENTS

Contemporary apartment complex located adjacent to the Residence Halls. Phase 1 (2004) consists of 237 beds including 57 four-bedroom apartments. Phase 2 (2006) consists of 190 additional beds. Apartments include kitchen, living room, two bathrooms, and private bedrooms.







**HEYWARD COMMUNITY CENTER 2004**

Provides a laundry facility, community center meeting space, and fitness room.





## VILLAGE APARTMENTS

---

Over three successive summers (2004-2006), replaced dated furnishings, carpet, and kitchen appliances in the Village apartments.





Francis Marion University

# CAMPUS GROUNDS







*“In its generous open treatment the plan attempts to capture the scale of the land and the character of the region in which it is set. The countryside is spacious, with open fields and woods. The land is even and low with much surface water. Large pines, oaks, magnolias, hollies, camellias, and azaleas form part of the green character of the area”*

– Francis Marion College Campus Development Plan 1971



## MALL FOUNTAIN CONSTRUCTION 2003

---

Constructed a 25-ft. diameter fountain and added new sidewalks, lighting and landscaping.



## HANSON PARK 2005

---

Located between the Cottage and the Wallace House, this park provides a serene, garden-like atmosphere for faculty, staff, students, and visitors.





## CAMPUS SIGNAGE

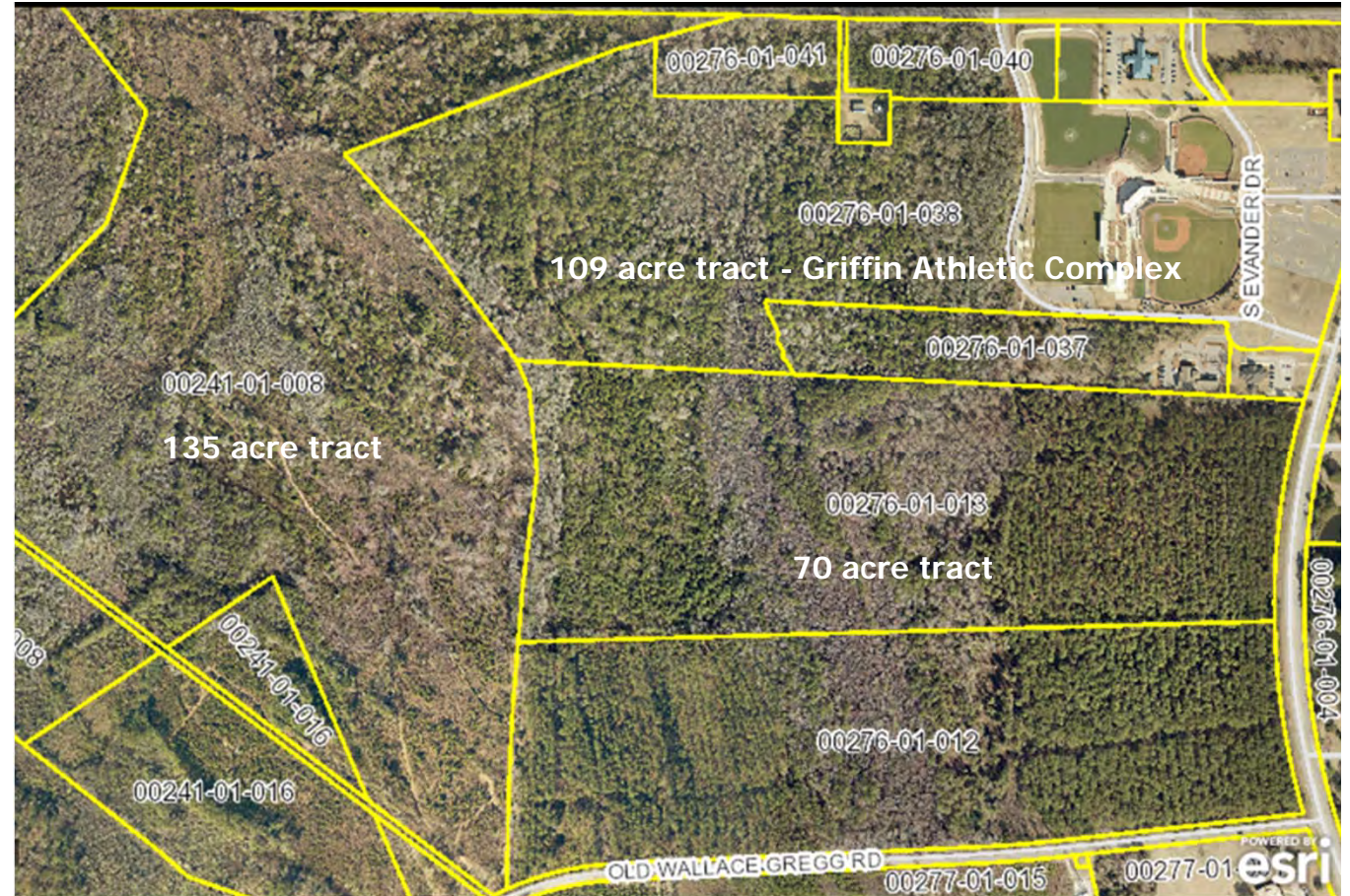
The University replaced building signs and installed street wayfinding signs across campus in 2013 followed by new campus street signs in 2014 and pedestrian wayfinding signs in 2017.





## MAJOR LAND ACQUISITIONS

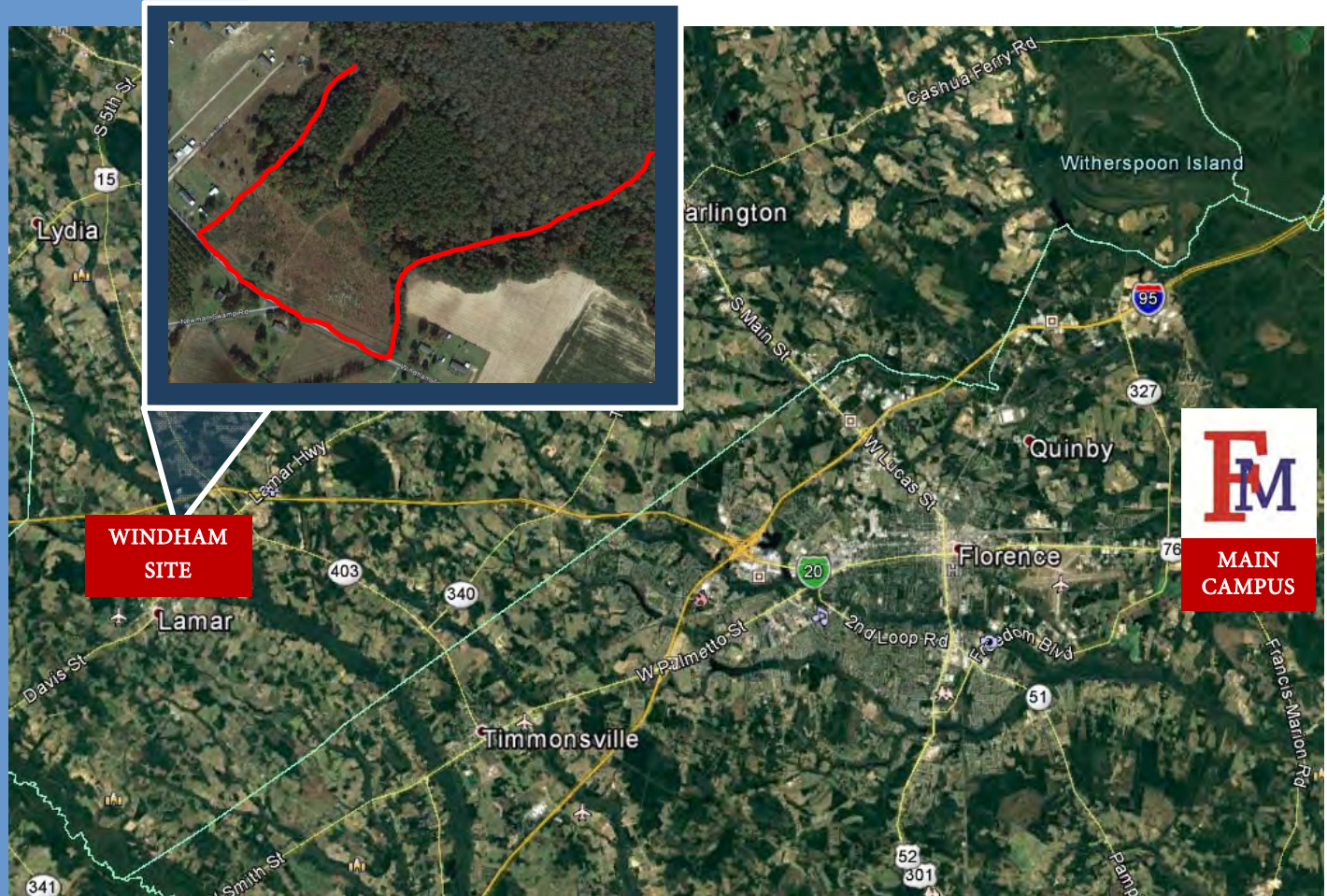
In 2005, the FMU Education Foundation obtained 109 acres across from the University campus, west of S.C. Highway 327. A large portion of this land was gifted to the University and became the site of the new Griffin Athletic Complex. Since that time the FMU Education Foundation has obtained two contiguous land tracts: a 70 acre tract south of the Griffin Athletic Complex and 135 acres west of the property.



*“Land is a commodity which colleges eventually run out of and we, therefore, cannot recommend too strongly the purchase of land while it is available.”*

– Francis Marion College Campus Development Plan 1971





## WINDHAM ENVIRONMENTAL CENTER

2007

Almost 7 years ago, the FMU Biology Department established a long leaf pine environmental restoration project on a portion of this property and also uses this property for class field trips, experiments, long term monitoring and population studies of birds, reptiles and amphibians. The FMU Foundation land leases this property with the property slated to become University property at the conclusion of the lease.



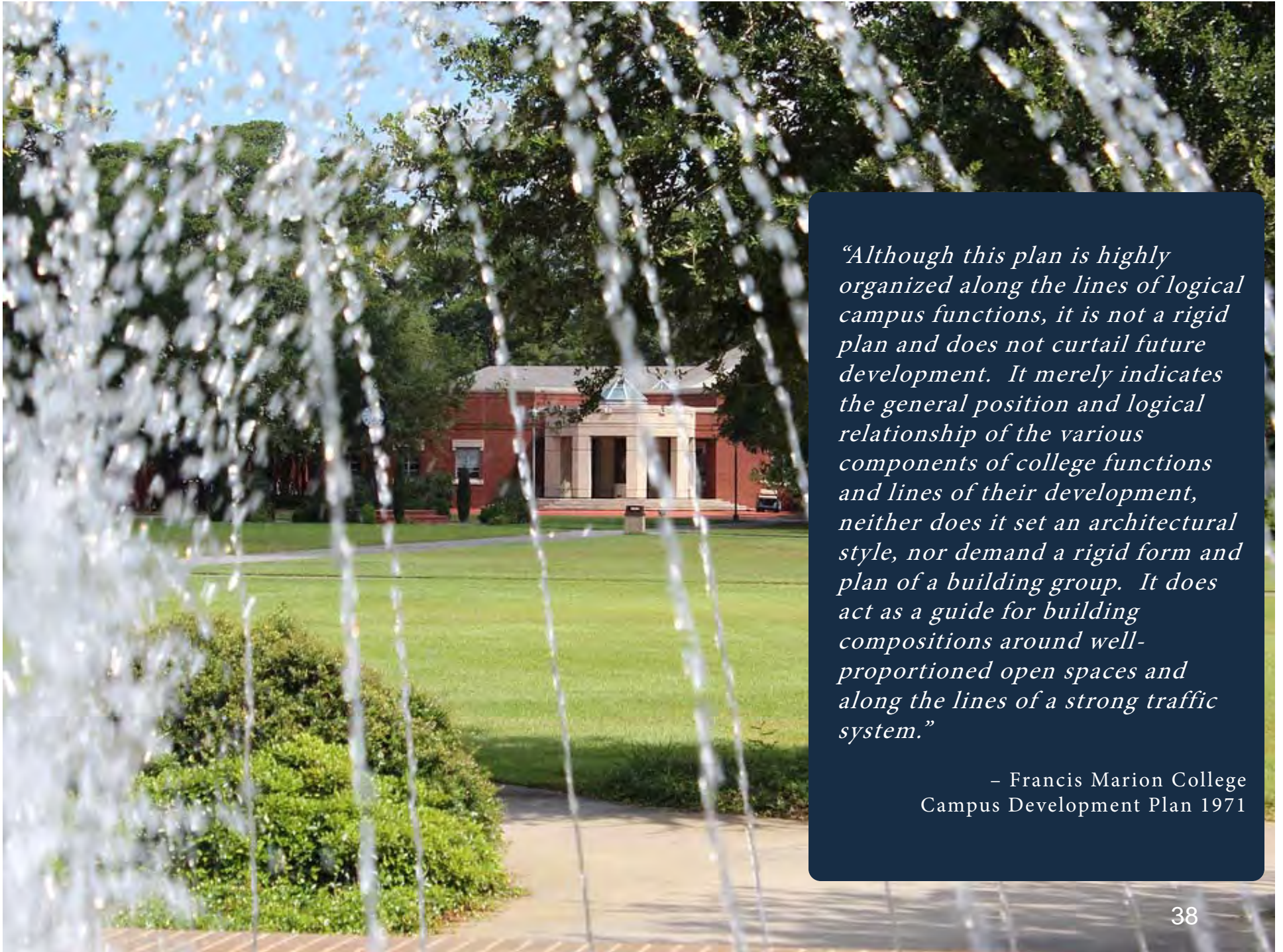


## HIGHWAY 327 STREETScape

2016

Completed the SC Highway 327 streetscape project to enhance flow of pedestrian and vehicular traffic. Installed raised, curbed and landscaped medians. Increased turn lanes to allow safer access and installed lighted pedestrian crosswalks with enhanced safety features.





*“Although this plan is highly organized along the lines of logical campus functions, it is not a rigid plan and does not curtail future development. It merely indicates the general position and logical relationship of the various components of college functions and lines of their development, neither does it set an architectural style, nor demand a rigid form and plan of a building group. It does act as a guide for building compositions around well-proportioned open spaces and along the lines of a strong traffic system.”*

– Francis Marion College  
Campus Development Plan 1971