

Instructions for Accessing the Wireless Network on Campus

Only two SSIDs are broadcasted on the main campus.

- FMU
- FMU_Guest

FMU is our secure wireless network dedicated to the FMU community (faculty, staff & students). Registration options are based upon the device being registered.

FMU_Guest is our courtesy wireless which provides Internet only allowing http, https and VPN access. This network is available 6:00am – 11:00pm daily.

*Please note: The PAC wireless provides access to FMU and PAC_Guest. FMU_Guest is not available at the PAC. PAC-Guest requires authorization from the Director of the PAC. *

Windows Devices

All windows devices (school owned or personal) must be registered for use on FMU wireless.

1. Select FMU_Guest >>open your browser>>select [Click Here to register your device](#) (located below accept button).

Guest Registration

Francis Marion University

Francis Marion University's Guest Wireless Access Acceptable Use Policy

This Policy is a guide to the acceptable use of the Francis Marion University's Guest Wireless network facilities and services.

Any individual connected to the Guest Wireless Network in order to use it directly or to connect to any other network(s), must comply with this policy, the stated purposes and Acceptable Use policies of any other network(s) or host(s) used, and all applicable laws, rules, and regulations.

Francis Marion University MAKES NO REPRESENTATIONS OR WARRANTIES CONCERNING THE AVAILABILITY OR SECURITY OF THE GUEST WIRELESS NETWORK, AND ALL USE IS PROVIDED ON AN AS-IS BASIS. BY USING THE GUEST WIRELESS NETWORK YOU AGREE TO DEFEND, INDEMNIFY, AND HOLD HARMLESS FRANCIS MARION UNIVERSITY FOR ANY LOSSES OR DAMAGES THAT MAY RESULT FROM YOUR USE OF THE GUEST WIRELESS NETWORK.

Francis Marion University takes no responsibility and assumes no liability for any content uploaded, shared, transmitted, or downloaded by you or any third party, or for anything you may encounter or any data that may be lost or compromised while connected to the Guest Wireless Network.

Francis Marion University reserves the right to disconnect any user at any time and for any reason. The Guest Wireless Network is provided as a courtesy to allow our guests access to the internet. Users will not be given access to the Francis Marion University intranet or permission to install any software on our computers.

Inappropriate use of the Guest Wireless Network is not permitted. This policy does not enumerate all possible inappropriate uses but rather presents some guidelines (listed below) that Francis Marion University may at any time use to make a determination that a particular use is inappropriate:

- Users must respect the privacy and intellectual property rights of others.
- Users must respect the integrity of our network and any other public or private computing and network systems.
- Use of the Guest Wireless Network for malicious, fraudulent, or misrepresentative purposes is prohibited.
- The Guest Wireless Network may not be used in a manner that precludes or hampers other users access to the Guest Wireless Network or other any other networks.
- Nothing may be installed or used that modifies, disrupts, or interferes in any way with service for any user, host, or network.

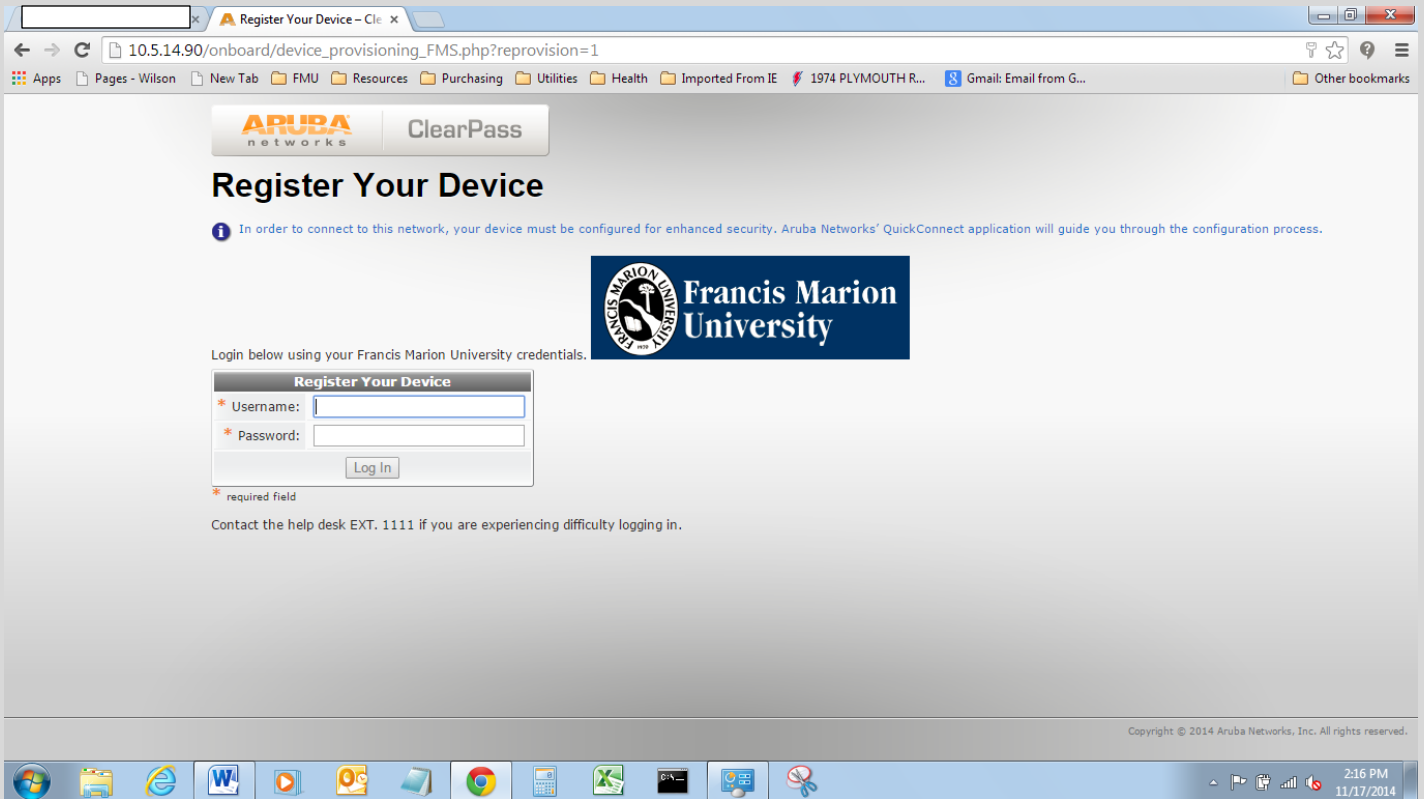
Please click the button to accept the Terms And Conditions.

If you are a part of the FMU community (faculty, staff, students), [Click Here](#) to register your device!!!

Copyright © 2013 Anuba Networks, Inc. All rights reserved.

10:28 AM
7/23/2013


2. Enter credentials>>Next>> QuickConnect configures system>>Connect



ARUBA networks ClearPass

Register Your Device

i In order to connect to this network, your device must be configured for enhanced security. Aruba Networks' QuickConnect application will guide you through the configuration process.



Login below using your Francis Marion University credentials.

Register Your Device

* Username:

* Password:

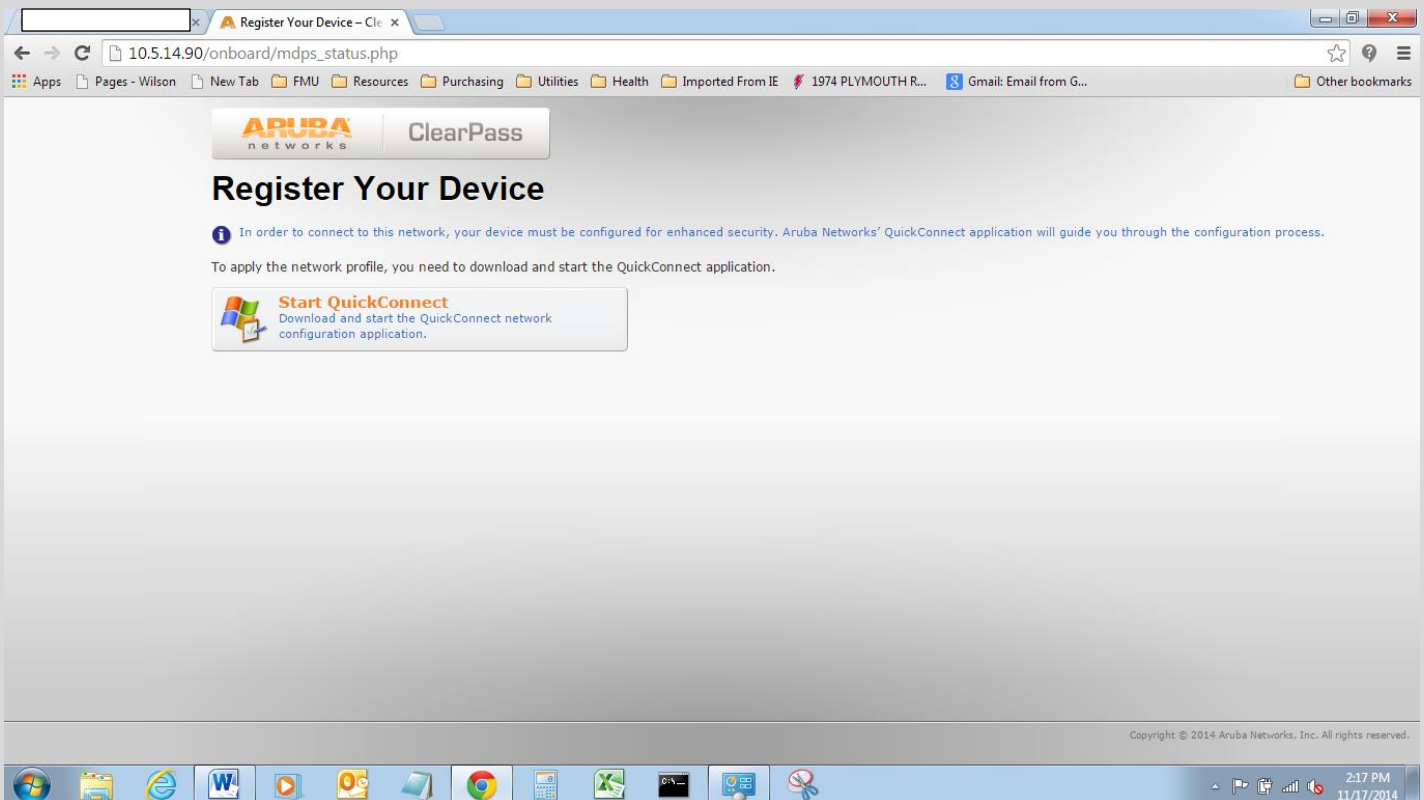
Log In

* required field

Contact the help desk EXT. 1111 if you are experiencing difficulty logging in.

Copyright © 2014 Aruba Networks, Inc. All rights reserved.

3. Register Your Device>>Start QuickConnect>>Run configuration file




ARUBA networks ClearPass

Register Your Device

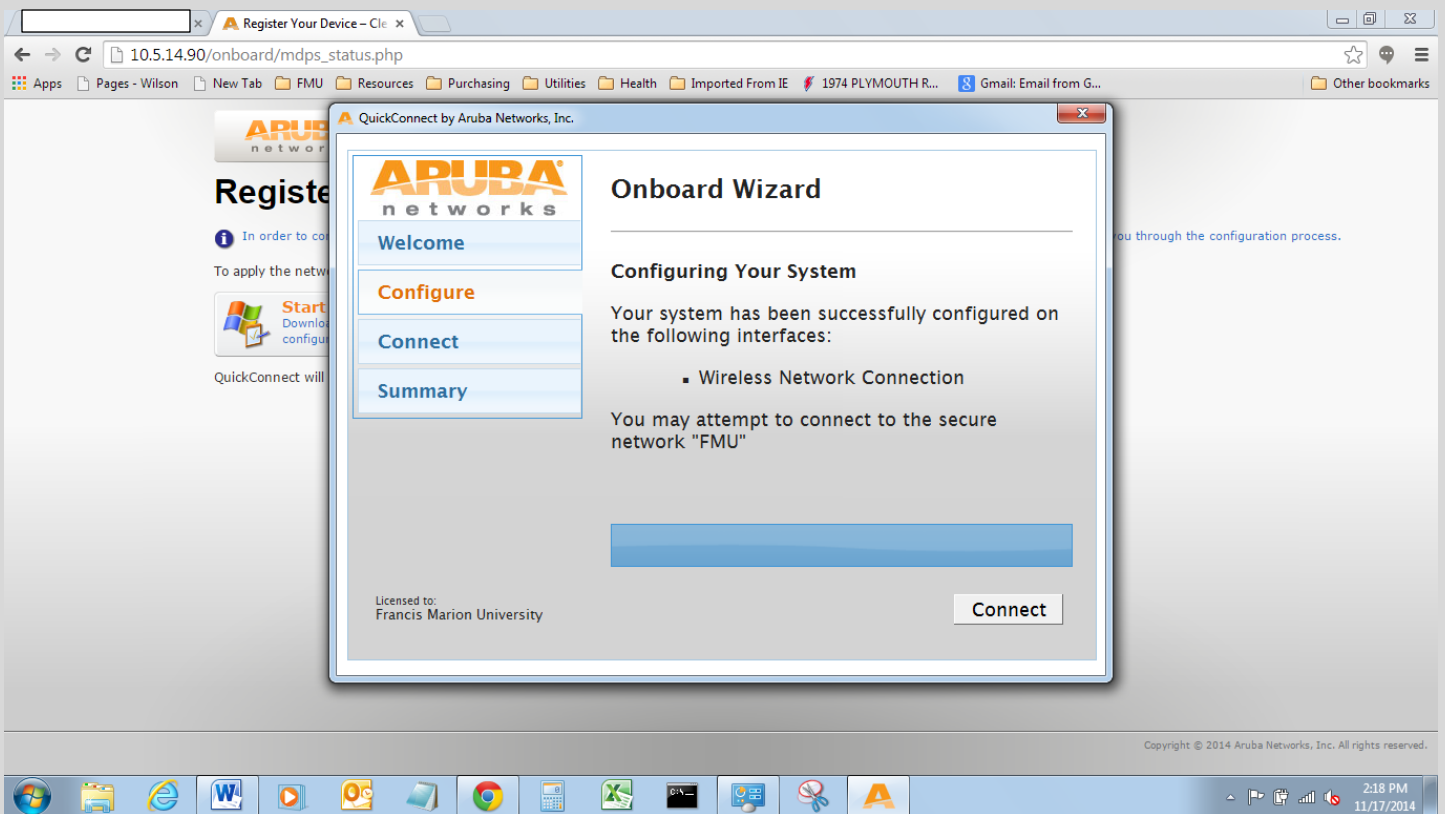
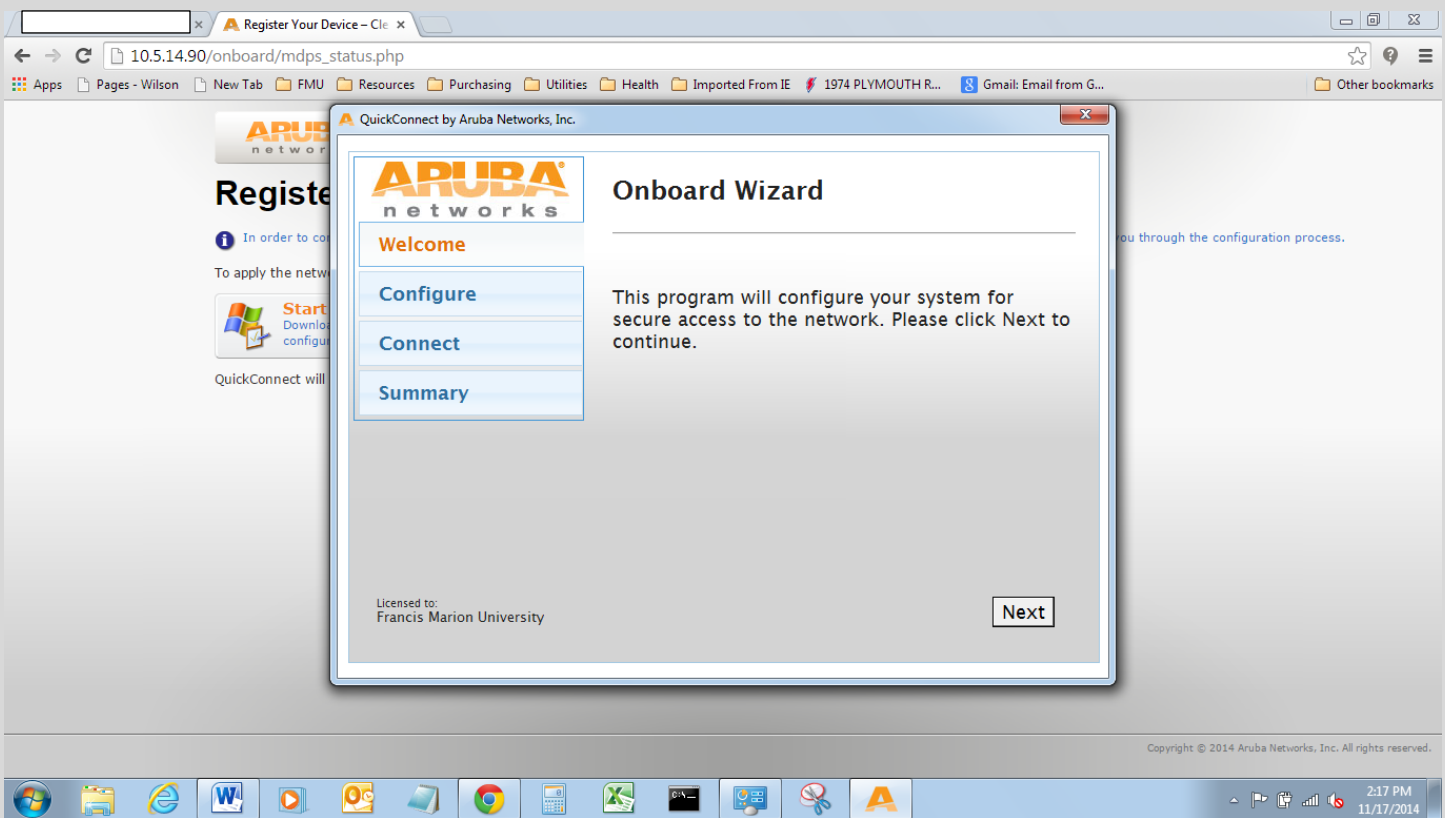
i In order to connect to this network, your device must be configured for enhanced security. Aruba Networks' QuickConnect application will guide you through the configuration process.

To apply the network profile, you need to download and start the QuickConnect application.

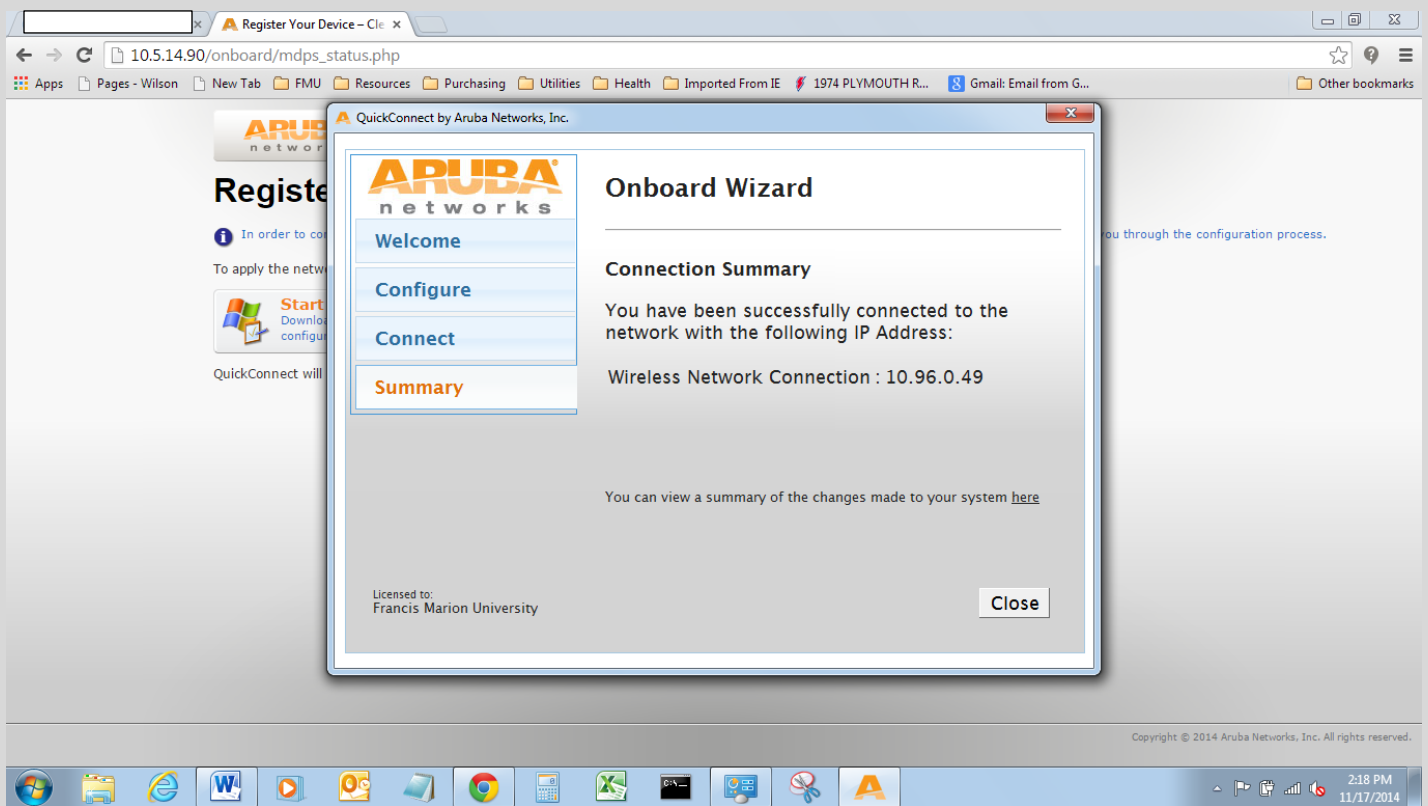
 **Start QuickConnect**
Download and start the QuickConnect network configuration application.

Copyright © 2014 Aruba Networks, Inc. All rights reserved.

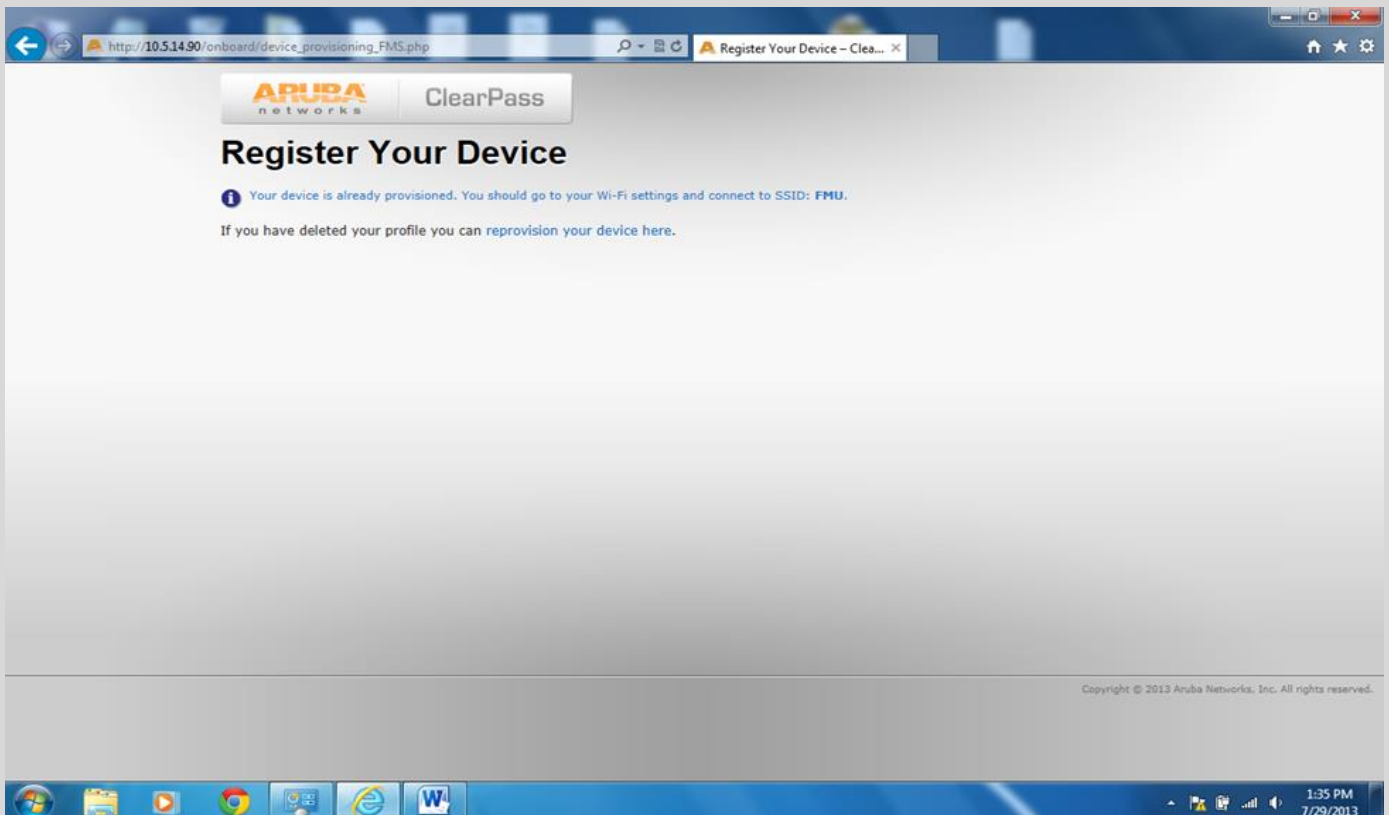
4. Yes, run the publisher program>>Onboard Wizard window opens>>Next



Once the configuration is complete select "Connect" for access to FMU wireless network.



Executing Step 1 at any time will quickly inform you if your device has been provisioned and will direct you through the process when needed.



IOS/MAC OS X

Simply do the following and you will be connected to FMU wireless network.

1. Select FMU>>enter credentials
2. Enter credentials >>
Username: TThomas Password: ***** (for employees)
Username: TThomas#### Password: ***** (for students)
3. Accept cppm2 Certificate and you are connected to FMU wireless network.

